

## Automated micro Loop Flow Reactor analyzer to measure sulfonamides by spectrophotometric method in sea water

Sergio Bodini – Luca Sanfilippo  
SYSTEA S.p.A.

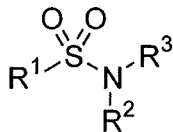


*Sensing toxicants in Marine waters makes Sense using biosensors*

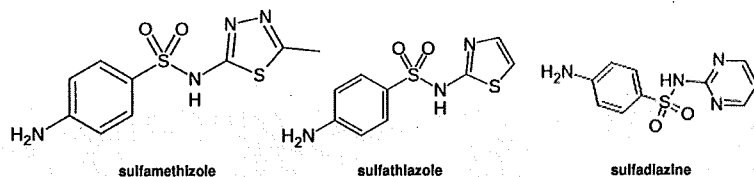
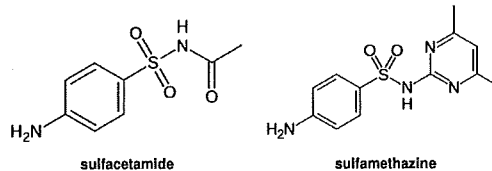
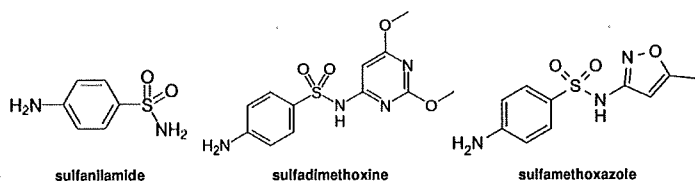


### SULFONAMIDES ACTIVE PRINCIPLES

#### SULFONAMIDES TESTED

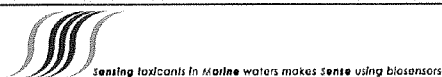
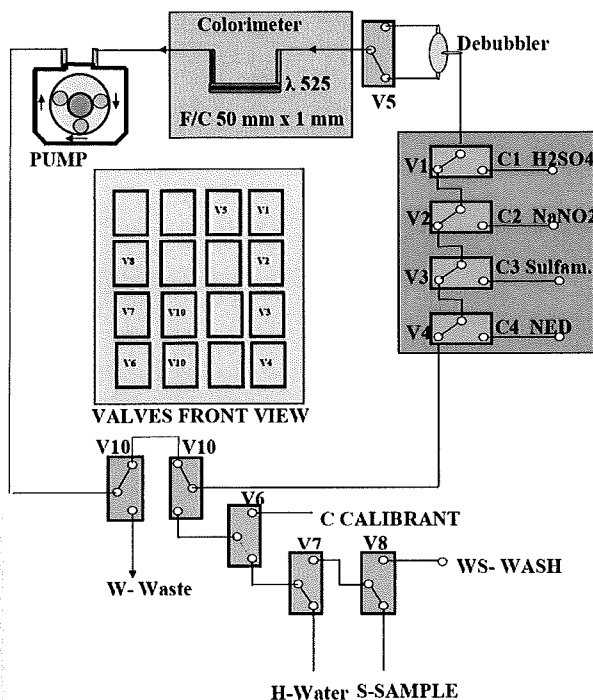


**Sulfanilamide (SNL)**  
**Sulfadimethoxine (SDM)**  
**Sulfamethoxazole (SOZ)**  
**Sulfacetamide (SAA)**  
**Sulfamethazine (SMZ)**  
**Sulfamethizole (SML)**  
**Sulfathiazole (STZ)**  
**Sulfadiazine (SDZ)**



*Sensing toxicants in Marine waters makes Sense using biosensors*

## SULFONAMIDE ANALYZER HYDRAULIC DIAGRAM



## DETERMINATION OF SULFONAMIDES ANALYTICAL PROCEDURE

- ✓ Update 1.5 mL loop with 7 mL of sample
- ✓ Add 0.07 mL of 0.2 %  $\text{NaNO}_2$  and 0.07 mL of 14.4 %  $\text{H}_2\text{SO}_4$
- ✓ Mix for 300 sec at room temperature (RT)
- ✓ Add 0.07 mL of 0.4 % Sulfamic Acid
- ✓ Mix for 90 sec at RT
- ✓ Add 0.07 mL of NED
- ✓ Mix for 90 sec at RT
- ✓ Measure Absorbance at 525 nm in a 50 mm flow cell
- ✓ Wash with DI water



## **SULFONAMIDE ANALYZER DESCRIPTION**



**DETECTOR**



**HYDRAULICS**



**TOUCH SCREEN**



**REAGENT AREA**



Sensing toxicants in marine waters makes sense using biosensors



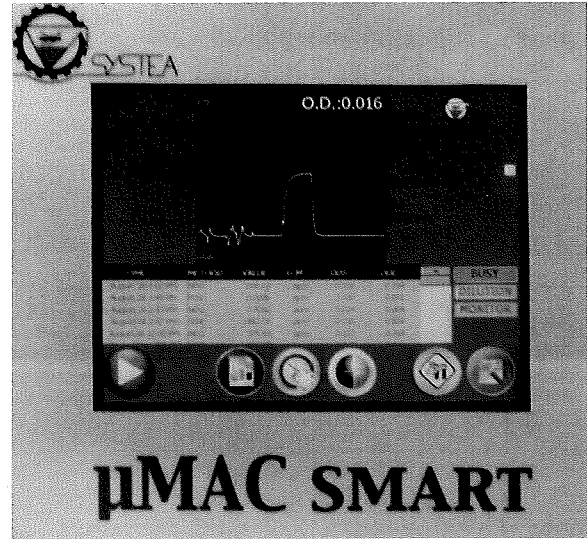
### **Automated measurement module main features**

- **Very simple hydraulics directly accessible by operator**
- **Applying the well-established  $\mu$ LFR analytical technology, it is suitable to run a large number of methods already developed and tested on field**
- **Lower reagents consumption: from 100 to 200  $\mu$ L for most of the reagents used**
  - **12 Vdc power supply allows to be powered by batteries**
    - **Very low maintenance**
    - **Instant start-up and operation**
- **Extended user interface and built-in memory data storage**



## Automated measurement module friendly user interface

- 8" colour touch screen
- All functions available on large screen buttons
  - Memory data storage
  - Alphanumeric tables and graphic data trends
- Extended user configuration
  - Easy data export through USB port.



## SAA CALIBRATION INSTRUMENT PERFORMANCE

Precision at 100 %	± 1.4 %
Accuracy at 100 %	± 0.1 %
Precision at 5 %	± 5.0 %
Accuracy at 5 %	± 6.1 %

